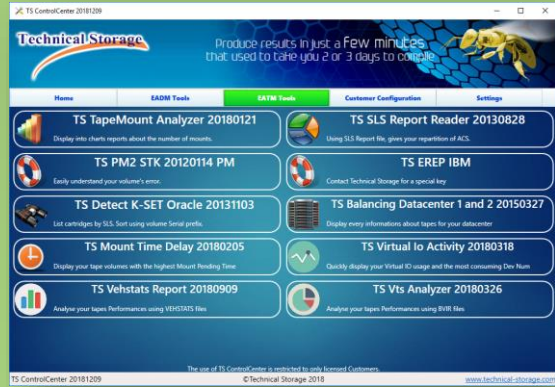
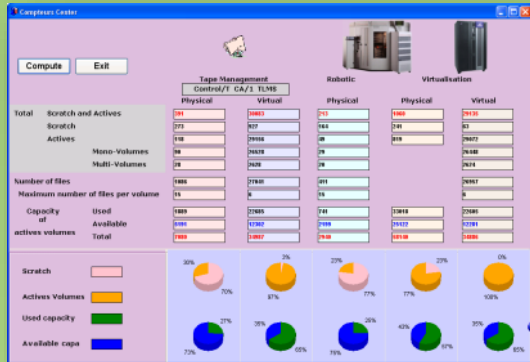




IBM zOS Infrastructure:
DASD DS8000 / Tape 7740

There is an increasing number of Big Data indexing applications able to create myriads of graphs. But recurring questions in data-centers are what kind of synthetic data is needed to optimize hardware provisioning and utilization? What type of alerts should be implemented for the Enterprise?

Armed with 30 years of zOS Tape experience, Technical Storage developed EATM (Easy Analyze Tape Mainframe) to get quick answers to 5 critical questions:



1. The Enterprise purchased 10 Petabytes of storage tape hardware. What's the real utilization of this architecture: 20% 40% or 90%? (zOS logical view)



5. Are there non-authorized programs using or accessing tape files?

2. zOS disk response times are easily visualized. Microseconds will soon be the norm. But what are the response times for the Enterprise's Virtual Tape System?

3. Has the Enterprise set alerts on the arrival of Throttling which will slow down Backup?

4. The Enterprise purchased 10 PB of storage tape hardware. What's the real utilization of this architecture: 20% 40% or 90%? (zOS hardware view)

