

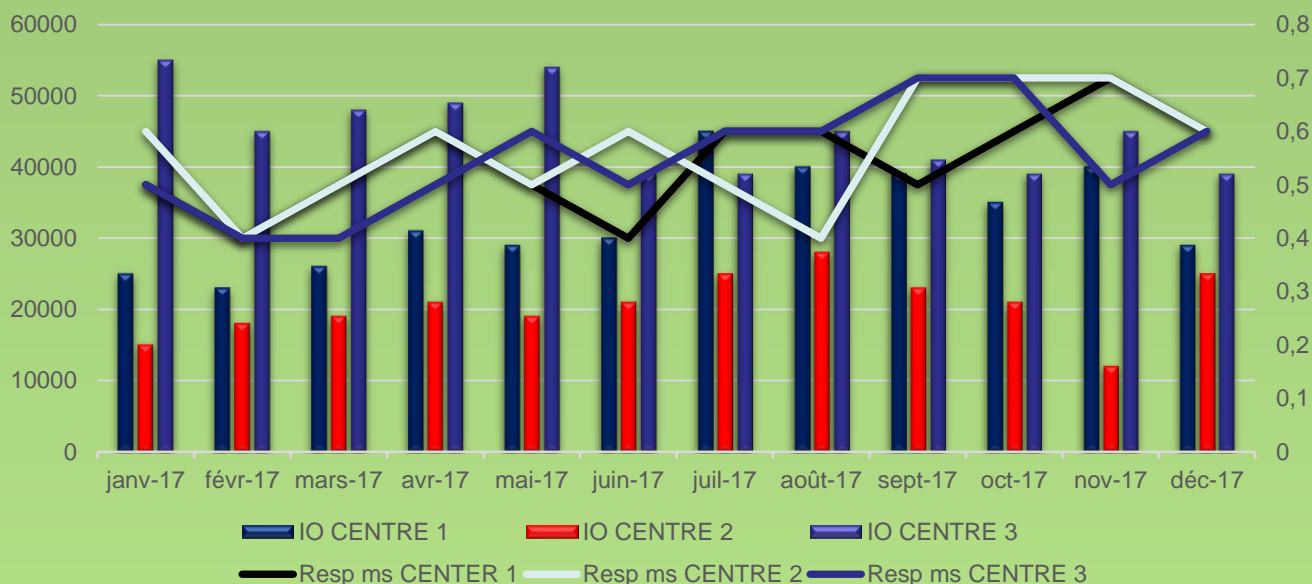


Our software applications were created with the help of customers, customers wanted to know how to make intelligent performance reports that allow to know where the performance problems are and thus to correct these problems to have production gain

In this example the client has 3 Data Centers and each Data Center has 4 LPARs, each Data Center has its CPU z 14 , DISK DS8800 and VTS TS7700 and its Robot 4500

This client has decided to simplify the performance studies and to show 1-month weighted data for the 3 Data Centers.

Datcenters Annual IO/Resp Time Report



It is a perfect example of an error that should not be made because weighting over 24 hours and over 31 days does not show the performance problems

We see in November that the Data Center 3 has made a weighted average over 24 hours and weighted over 31 days a number of 45000 I / O sec and that the response time disk was with the same weighting of 0.5ms

